



# DRAGON

## LPG/NH3 Transport Trailer



### DESIGNED TO PERFORM

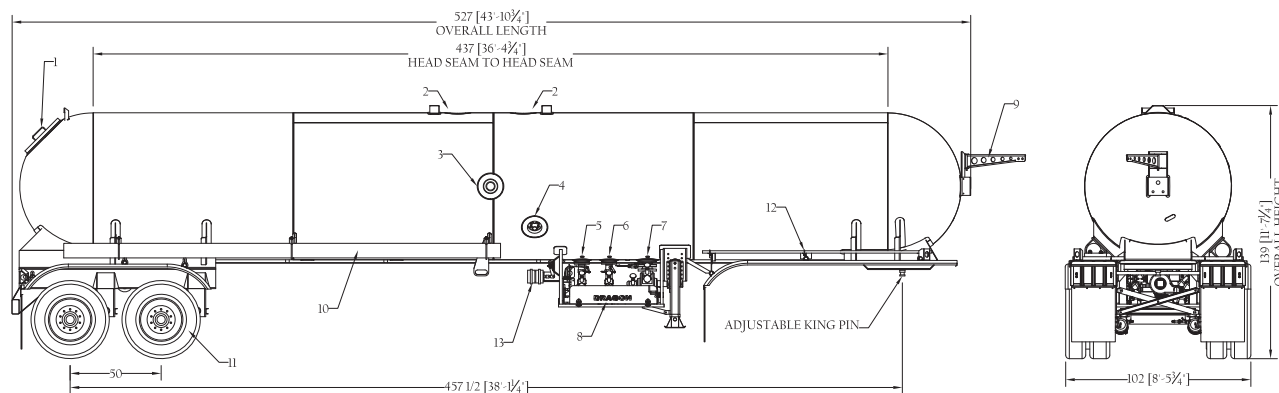
Dragon's LPG Transport Trailer is designed for performance, ease of operation, and safety. Built in accordance with ASME Section VIII, Div. 1, D.O.T. specification MC331, and NFPA 58.

### SPECIFICATIONS:

- 10,600, 11,500 & 12,600 Gallon Capacity

*See back. Specifications subject to change.*

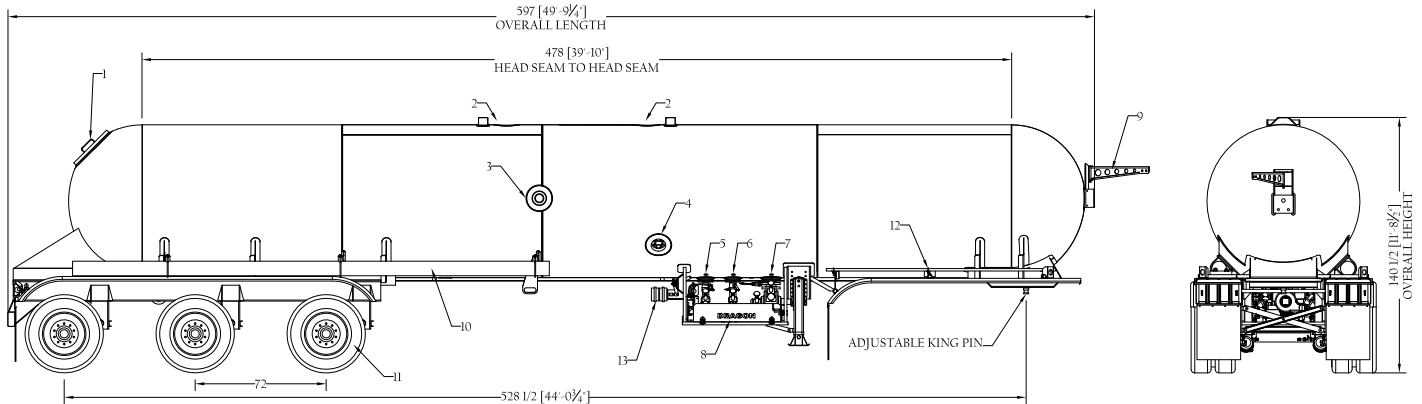
### 10,600 SHOWN BELOW



[tanktrailer.sales@modernusa.com](mailto:tanktrailer.sales@modernusa.com) • [www.dragonproductsltd.com](http://www.dragonproductsltd.com) • 877-231-8198  
U.S. owned and operated for over 50 years. © Copyright 2014 Modern Group Inc. All rights reserved.

# LPG/NH3 Transport Trailer

12,600 SHOWN BELOW



## CAPACITY: 10,600 GALLONS

- Overall length: 44'
- SA 517 Steel; MAWP: 265 PSIG @ -20°F/125°F Built in accordance with ASME Section VIII, Div. 1, D.O.T. specification MC331, and NFPA 58
- Subframe and Upper Coupler constructed of 1/4" steel
- Suspension: 2 axle, air ride with integrated axles, 77-1/2" track width.
- Wheels: 24.5" X 8.25" steel
- Kingpin: bolted adjustable king pin plate, 3" increments.
- 4" Blackmer vane pump hydraulically driven
- Gauges: level gauges set at 83%, 85%, 86.5%, and 90%, 4" dial float gauge, 0-400 psi glycerin filled pressure gauge, and -40°F/120°F dial thermometer all installed in recess well on the curb-side
- Estimated weight: 22,800 lbs

## CAPACITY: 11,500 GALLONS

- Overall length: 43'
- 84" OD dot. Specification MC-331
- Design pressure: 250 PSIG working pressure.
- Operating temperature: -20° – 125° Fahrenheit
- Subframe: front and rear subframes constructed of 1/4" steel.
- Suspension: 2 axle, air ride with integrated axles 77-1/2" track width.
- Wheels: 22.5" X 8.25" Aluminum disc wheels (6)
- Kingpin: bolted adjustable king pin plate, 3" increments.
- Gauges: visual percentage gauge, (4) fixed outage gauges set at 82%, 85%, 86.5%, And 90%, 0-300# liquid filled pressure gauge, and thermometer all installed in recess wells curb-side
- Estimated weight: 21,500 lbs

## CAPACITY: 12,600 GALLONS

- Overall length: 49' 4"
- SA 517 Steel; MAWP: 250 PSIG @ -20°F/125°F Built in accordance with ASME Section VIII, Div. 1, D.O.T. specification MC331, and NFPA 58
- Subframe and Upper Coupler constructed of 1/4" steel.
- Suspension: 3 axle, air ride with integrated axles, 77-1/2" track width.
- Wheels: 24.5" X 8.25" steel
- Kingpin: bolted adjustable king pin plate, 3" increments.
- 4" Blackmer vane pump hydraulically driven
- Gauges: level gauges set at 83%, 85%, 86.5%, and 90%, 4" dial float gauge, 0-400 psi glycerin filled pressure gauge, and -40°F/120°F dial thermometer all installed in recess well on the curb-side
- Estimated weight: 27,200 lbs



[tanktrailer.sales@modernusa.com](mailto:tanktrailer.sales@modernusa.com) • [www.dragonproductsltd.com](http://www.dragonproductsltd.com) • 877-231-8198

U.S. owned and operated for over 50 years. © Copyright 2014 Modern Group Inc. All rights reserved.