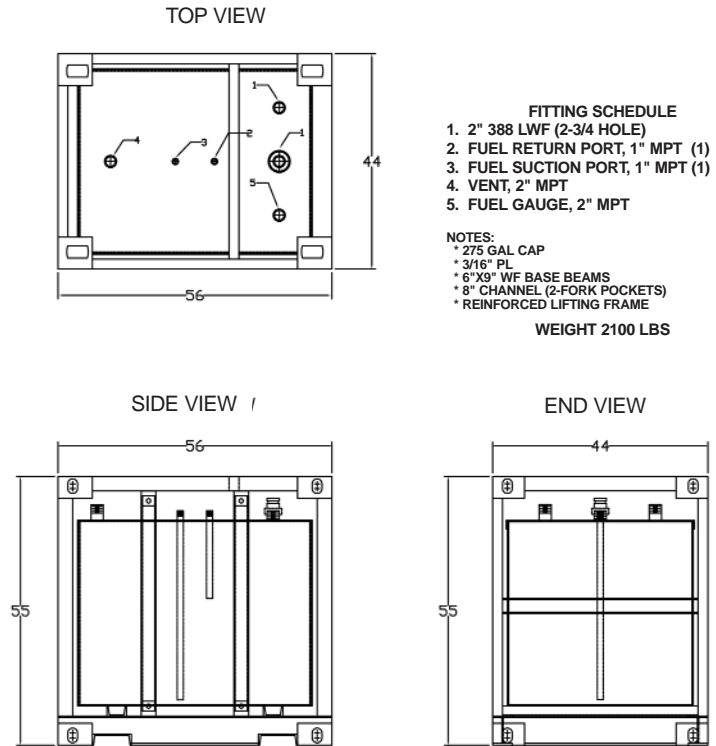


# SPECIFICATIONS

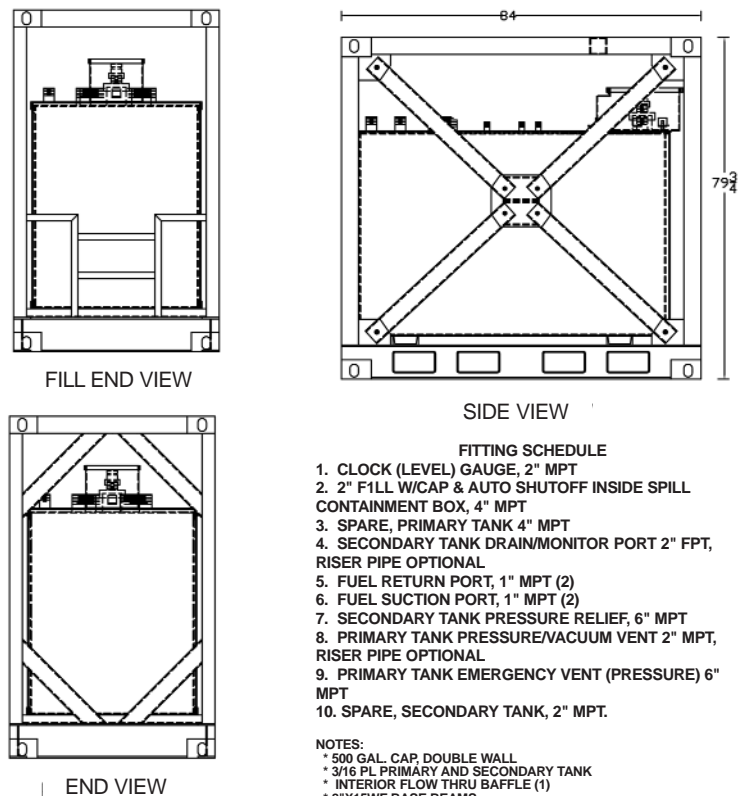
# Fuel Tanks

- UL-142 Listed
- SWRI Tested to SWRI 97-04
- UL-2085 Fire-Rated Available
- Steel Tank Institute Certified
- Complies with NFPA 30A Fire Resistance Requirements
- Air Pressured Tested to Specifications
- STI 30-Year Warranty Available
- 275 to 10,000 Gallon Sizes
- Frame Construction or Skid Mounted
- Polyurethane Paint Systems
- Emergency Vent Connection
- Gauge Connection
- Fill and Overflow Connections
- Fill Equipped with Overflow Shutoff
- Fuel Suction and Return Connections
- Primary Vent Connection
- Interstitial Monitoring Port

## 275 GALLON FUEL TANK - SINGLE WALL



## 500 GALLON FUEL TANK - DOUBLE WALL



### You Benefit 4 Ways

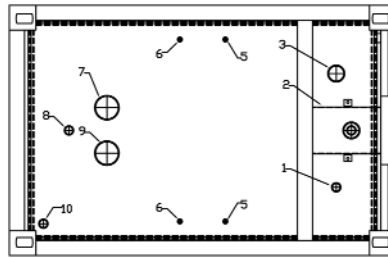
1. Increases your Equipment Run Time.
2. Provides Fuel/Environmental Safety via U.L. Listing.
3. Increases Rental/Leasing Fees
4. Decreases Personnel Operating Cost

# SPECIFICATIONS

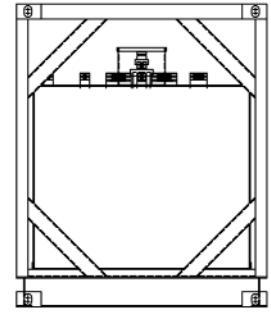
- UL-142 Listed
- SWRI Tested to SWRI 97-04
- UL-2085 Fire-Rated Available
- Steel Tank Institute Certified
- Complies with NFPA 30A Fire Resistance Requirements
- Air Pressured Tested to Specifications
- STI 30-Year Warranty Available
- 275 to 10,000 Gallon Sizes
- Frame Construction or Skid Mounted
- Polyurethane Paint Systems
- Emergency Vent Connection
- Gauge Connection
- Fill and Overflow Connections
- Fuel Suction and Return Connections
- Primary Vent Connection
- Interstitial Monitoring Port

# Fuel Tanks

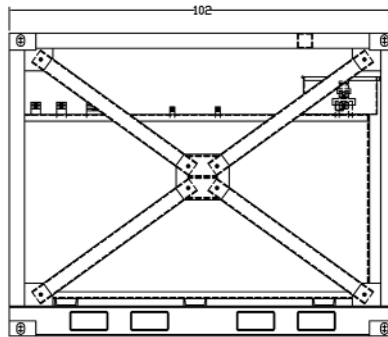
## 1000 GALLON FUEL TANK - DOUBLE WALL



TOP VIEW



END VIEW



SIDE VIEW

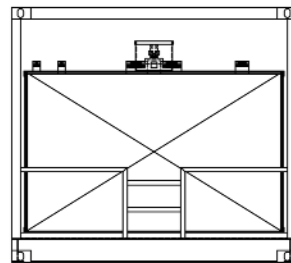
- FITTING SCHEDULE**
1. CLOCK (LEVEL) GAUGE, 2" MPT
  2. 2" FILL W/CAP & AUTO SHUTOFF INSIDE SPILL CONTAINMENT BOX, 4" MPT
  3. SPARE, PRIMARY TANK 4" MPT
  4. SECONDARY TANK DRAIN/MONITOR PORT 2" FPT, RISER PIPE OPTIONAL
  5. FUEL RETURN PORT, 1" MPT (2)
  6. FUEL SUCTION PORT, 1" MPT (2)
  7. SECONDARY TANK PRESSURE RELIEF, 6" MPT
  8. PRIMARY TANK PRESSURE/VACUUM VENT 2" MPT, RISER PIPE OPTIONAL
  9. PRIMARY TANK EMERGENCY VENT (PRESSURE) 6" MPT
  10. SPARE, SECONDARY TANK, 2" MPT.

- NOTES:**
- \* 1000 GAL. CAP DOUBLE WALL
  - \* 3/16 PL PRIMARY AND SECONDARY TANK
  - \* INTERIOR FLOW THRU BAFFLE (1)
  - \* 8"X15WF BASE BEAMS
  - \* 4X10 RECTANGULAR TUBE (2-FORK POCKETS)
  - \* REINFORCED LIFTING FRAME

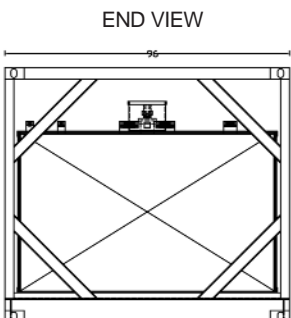
## 2300 GALLON FUEL TANK - DOUBLE WALL

### FITTING SCHEDULE

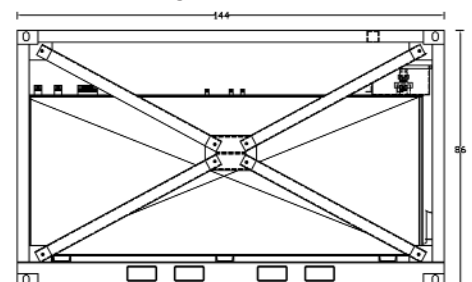
1. CLOCK (LEVEL) GAUGE, 2" MPT
2. 2" FILL W/CAP & AUTO SHUTOFF INSIDE SPILL CONTAINMENT BOX, 4" MPT
3. SPARE, PRIMARY TANK 4" MPT
4. SECONDARY TANK DRAIN/MONITOR PORT 2" FPT, RISER PIPE OPTIONAL
5. FUEL RETURN PORT, 1" MPT (2)
6. FUEL SUCTION PORT, 1" MPT (2)
7. SECONDARY TANK PRESSURE RELIEF, 6" MPT
8. PRIMARY TANK PRESSURE/VACUUM VENT 2" MPT, RISER PIPE OPTIONAL
9. PRIMARY TANK EMERGENCY VENT (PRESSURE) 6" MPT
10. SPARE, SECONDARY TANK, 2" MPT.



FILL END VIEW



END VIEW



SIDE VIEW

- NOTES:**
- \* 2300 GAL. CAP, DOUBLE WALL
  - \* 3/16 PL PRIMARY AND SECONDARY TANK
  - \* INTERIOR FLOW THRU BAFFLE (1)
  - \* 8"X15WF BASE BEAMS
  - \* 4X10 RECTANGULAR TUBE (2-FORK POCKETS)
  - \* REINFORCED LIFTING FRAME

WEIGHT 8100 LBS



### Options

- Tank Level Gauges (Clock Type)
- Fill and Dispensing Hose
- Dispensing Pumps
- Polyurethane Coating Systems
- Level Alarms and Shutoffs