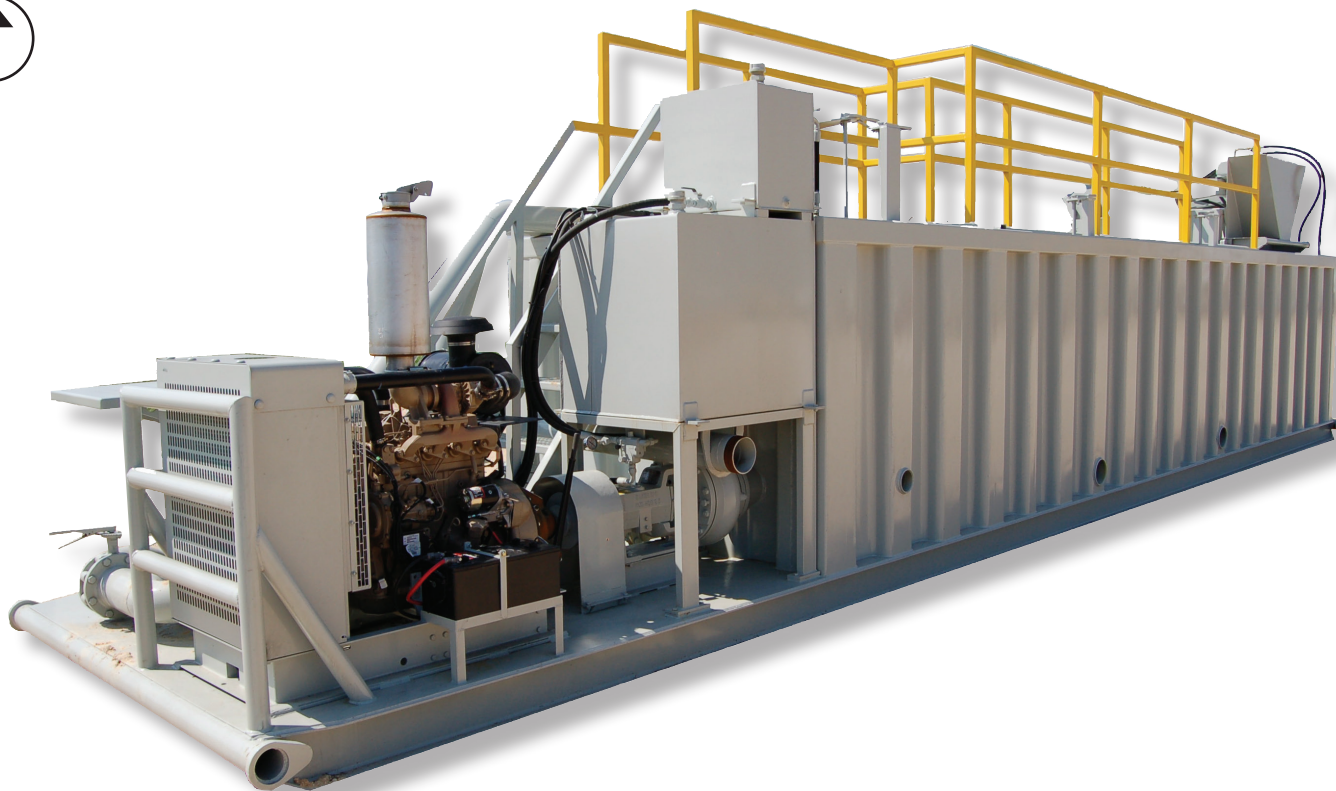




225BBL Premix Mud System



SPECIFICATIONS:

- Active Capacity - 225BBL (This includes a 35BBL slug compartment)
- Dimensions - 41' long x 8' 6" wide
- Construction- Three runner 8" I-beam skid. 3/8" Plate floors. 1/4" Heavy crimp walls. Handrail, walkway and stairs. 5" square tubing top runner
- Equipment - The 6 x 8 centrifugal pump is powered by a new John Deere 4.5 liter electric engine. It is also equipped with a 6" hopper, 3 mud guns, hydraulic shale shaker, and all necessary internal piping and manifolds



frac.sales@modernusa.com • www.dragonproductsltd.com • 866-914-8198

U.S. owned and operated for over 50 years. © Copyright 2014 Modern Group Inc. All rights reserved.