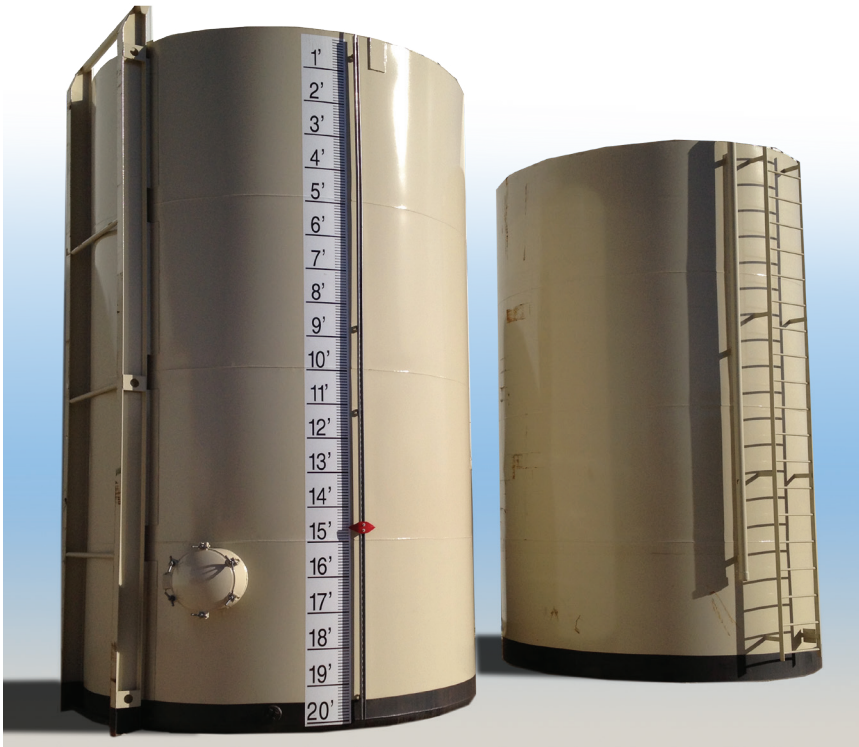




DRAGON[®]

400BBL Upright Skid Mounted Flow Back Tanks



SPECIFICATIONS:

- 3/16 or 1/4 inch steel plate construction
- Steel shot blasting prior to direct to metal industrial coating paint
- Customized paint color and add-on placement
- Hydrotested
- Built to API specifications
- Internal lining available



ADD ONS:

- API Manways
- Threaded Fittings
- Ladders • Decelerators
- Collapsible Cage Ladder
- Cable Level Gauges
- Fill Lines • Gel Lines
- Mud Circulating Lines
- Butterfly Valves • Thief Hatches
- Sloop Floor for easy clean-up



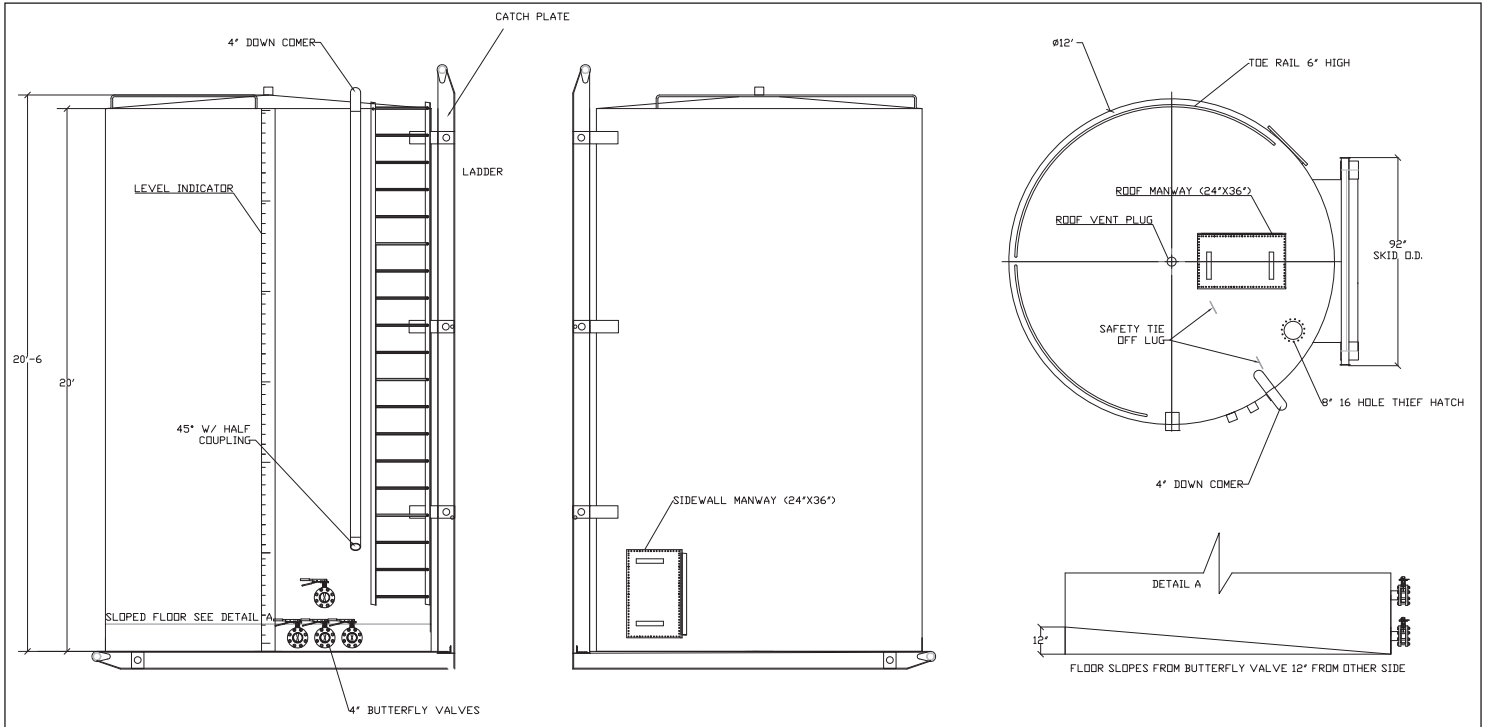
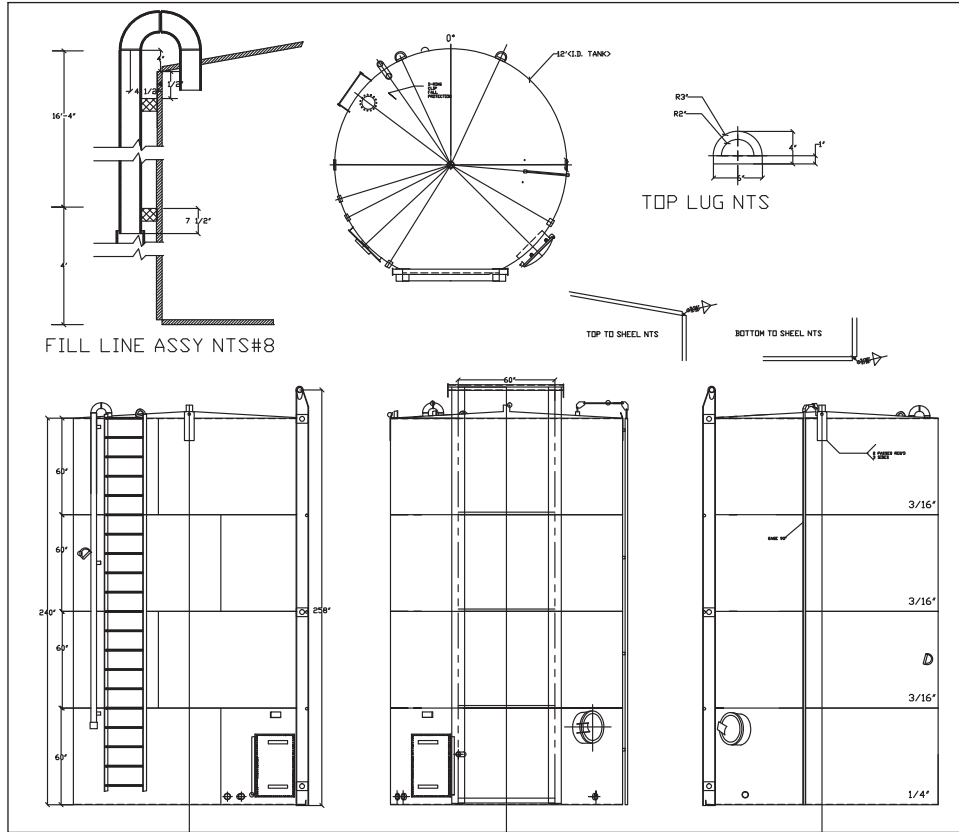
email: production.equipment@modernusa.com

400BBLSKIDTANK • 7/14

www.dragonproductsltd.com • 800-231-8198

U.S. owned and operated for over 50 years. © Copyright 2014 Modern Group Inc. All rights reserved.

400BBL Upright Skid Mounted Flow Back Tanks



email: production.equipment@modernusa.com

www.dragonproductsltd.com • 800-231-8198

U.S. owned and operated for over 50 years. © Copyright 2014 Modern Group Inc. All rights reserved.