



## Mini Smooth Wall Frac Tank



### SPECIFICATIONS:

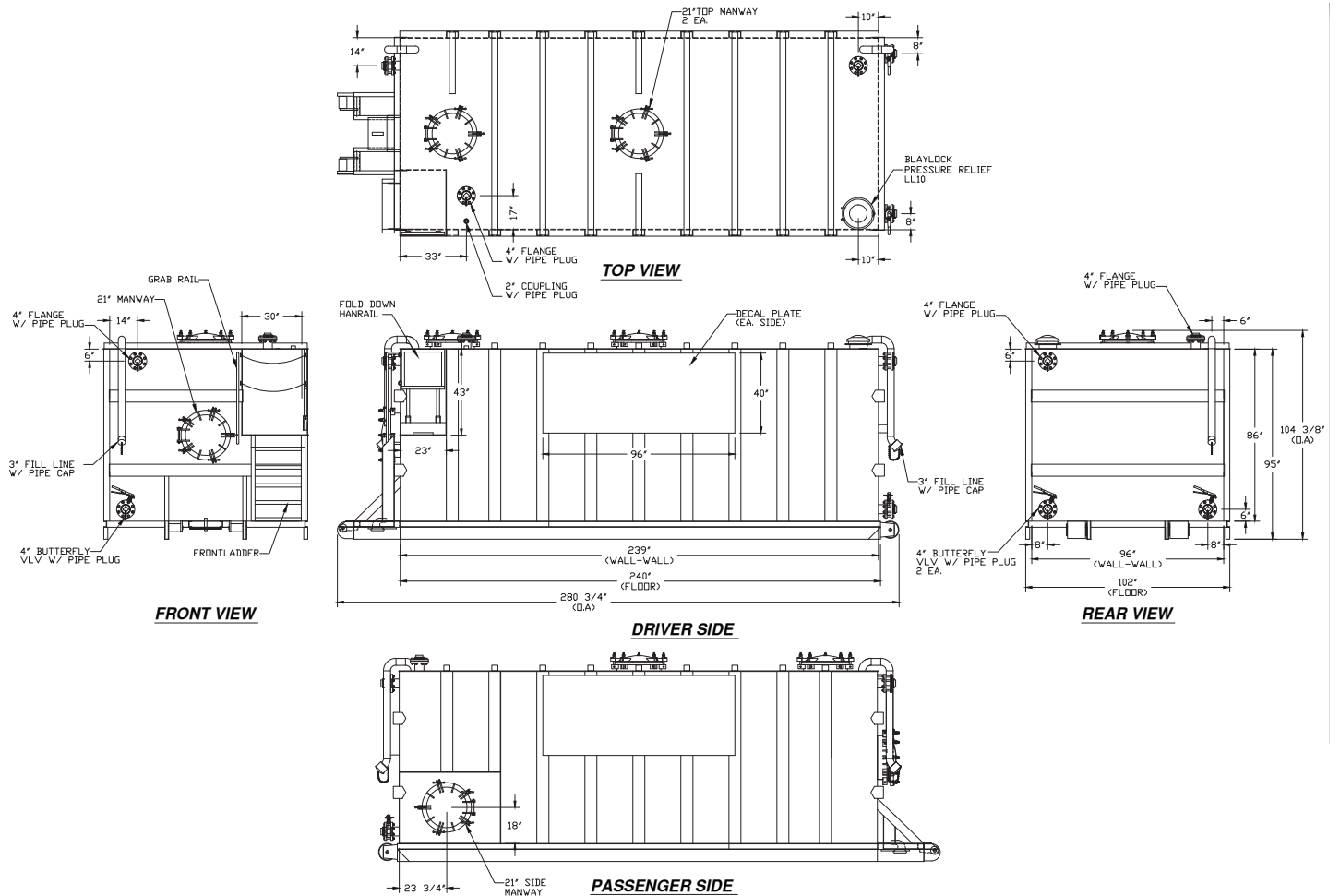
- 8,500 Gallon capacity
- Suitable for liquid waste
- Unit can be moved by roll-off truck or trailer
- 1/4 inch construction
- Steel shot blasted
- Most durable paint and lining in the industry
- Floor structured under coated
- Tanks are steel grit blasted and painted to spec.
- Built from new 1/4" heavy duty steel.
- Drain/fill: 4" floor drain at rear end, 3" fill line pipe at front and rear, 4" butterfly valve in front and back.
- Manway: 21" manways - front, top (2), and passenger side.
- Welds: all welds continuous except substructure cross-members.
- Also available in mini mix tank configuration



[tanktrailer.sales@modernusa.com](mailto:tanktrailer.sales@modernusa.com) • [www.dragonproductsltd.com](http://www.dragonproductsltd.com) • 877-231-8198

U.S. owned and operated for over 50 years. © Copyright 2014 Modern Group Inc. All rights reserved.

# Mini Smooth Wall Frac Tank



[tanktrailer.sales@modernusa.com](mailto:tanktrailer.sales@modernusa.com) • [www.dragonproductsltd.com](http://www.dragonproductsltd.com) • 877-231-8198

U.S. owned and operated for over 50 years. © Copyright 2014 Modern Group Inc. All rights reserved.