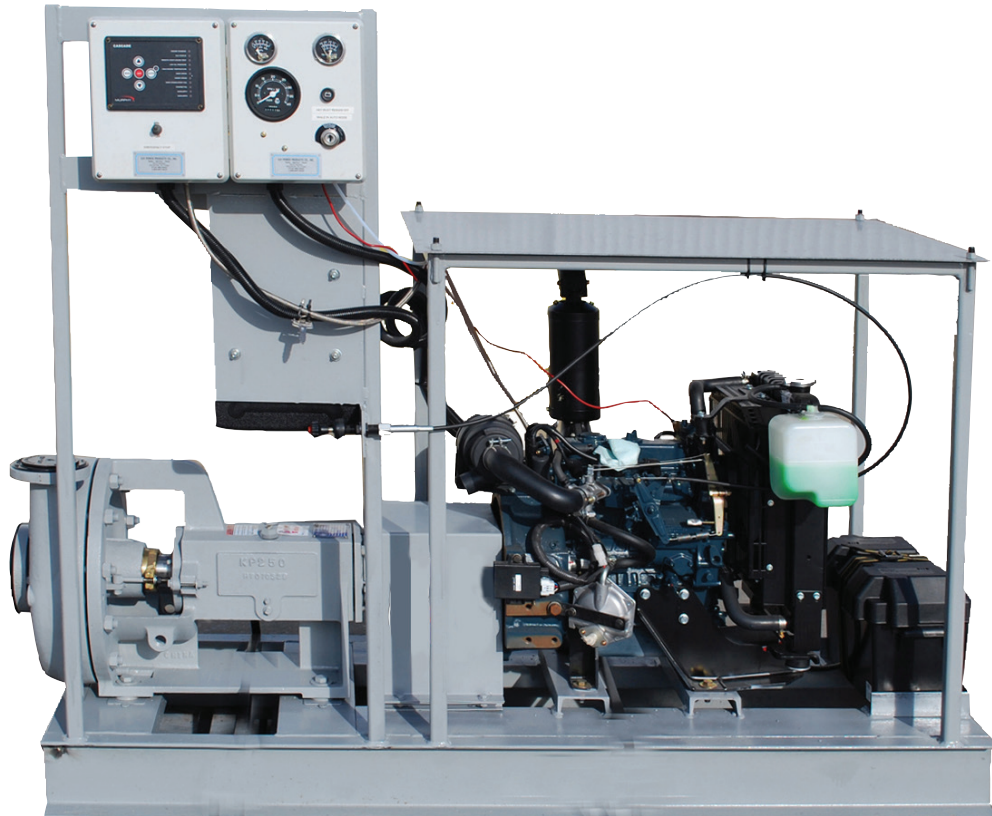




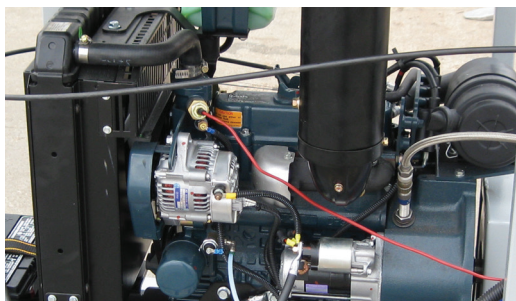
DRAGON

Natural Gas Centrifugal Pump



MODEL:

- Dragon 3x2 Oil Lubed Pump
- Kubota DG972-E2 Natural Gas Engine
- Murphy Cascade Control Panel
- Heavy Duty Galvanized Skid



Dragon support includes 24/7 access to our skilled service teams and vast parts inventory. We are always here for you, because we know you do not want downtime. You want quality, dependability and the support of a long-standing oilfield equipment expert backing you up.



NATGASCENPUMP • 8/14

frac.sales@modernusa.com • www.dragonproductsltd.com • 866-914-8198

U.S. owned and operated for over 50 years. © Copyright 2014 Modern Group Inc. All rights reserved.