



OILFIELD EQUIPMENT



DRAGONPRODUCTSLTD.COM





DRAGON

Dragon Products is a leading manufacturer of mission critical products serving the energy and industrial industries. U.S. and family owned and operated for more than 50 years the Dragon name is synonymous with “severe duty engineered” equipment for a broad range of applications including well servicing, bulk storage, liquid and solids hauling and a variety of pumping and mud solutions.

Our inventory and product lines include tanks and trailers; roll off equipment; pumps and stimulation equipment; mobile workover rigs; and surface production equipment.

TRAILERS

Severe duty
engineered to
withstand the toughest
jobs that require the
toughest equipment.





Every year there are new challenges and applications in the world of hauling. Dragon continually answers the call with its expansive line of innovative trailer products, from vacuum tanks to removable necks to container trailers. Customers go with the Dragon name because they know we understand their challenges, and that we have the engineering experience and production capacity to deliver the severe-duty equipment, service and support they need – every time, everywhere.

DOUBLE CONCIAL/CRUDE HAULER

- DOT Code 407
- Standard and custom plumbing
- 8400, 9000, 9500, 10500, 11000 Gallon Capacity
- 7400 Gallon Pup trailer & 120bbl body mounted tank
- Aluminum or Stainless Steel
- Bottom Air Actuated Valves
- Also available in Low Profile or Rocky Mountain Series



VACUUM TRAILER

- 120-200 bbl Code and non-code
- 70-105 bbl Bobtail also available
- Steel, Aluminum or Stainless Steel
- Self contained or hydraulic drive pump packages



VACUUM BOX

- Floor: 1/4 PL one piece
- Crossmembers: 3 x 4.1 channel 12" on center
- Walls/Roof: 1/4 PL solid welded, inside liner hooks
- Structure: Tubing and formed channel supports rated to operate at 30" hg



ROLL-OFF

- Single Container, Two Container, Winch Bed, Roll-off Hoist Tag, and Roll-off Hoists available
- Single operable ability to load 16'-22' containers



SAND FORCE

- Each unit has 1150 cubic feet of storage, more than the typical pneumatic tanker design
- Trailer has a GVWR of 80,000 lbs
- The two gravity delivery slide gates have 13" x 23" openings
- Gravity fed bottom discharge system offloads 25 tons of sand in less than 12 minutes



DRY BULK PNEUMATIC TRAILER

- Capacity: 1050 cu. ft.
- Tank Construction : 5454-H32 aluminum tanks - Designed operating pressure of 15 psi
- 45-degree hopper slope
- Manholes: 20" heavy-duty cast aluminum, with aluminum cam handles and replaceable nylon wear plates under each hold-downs
- Two cover retainers per manhole with white neoprene gaskets in manhole covers, manholes hinged on curbside



RANCO ALUMINUM END DUMP

- 32ft, 54" high wall, aluminum end dump trailer
- Type: Aluminum lightweight single wall 2 axle
- Capacity: Not to exceed dot bridge laws, distributed
- Commodity: Non demolition materials
- Length: 384" (32') oal, at lower rail
- Box: 5454 h32 aluminum, 1/4" thick floor, .155" thick wall, single panel, 84" wide on 102" wide axles





FRAC TANKS & CONTAINERS

The toughest jobs require
the toughest equipment.

With more than 30 years of expertise in manufacturing tanks, customers trust the Dragon name. In-house engineering, vast production capacity, and knowledgeable support teams deliver the severe-duty equipment and service you need every time, every where.

MINI INDUSTRIAL STORAGE TANK

- 10,00 Gallon capacity
- Suitable for liquid waste
- Unit can be moved by roll-off truck or trailer
- Manway: 21" manways – front, top (2), and passenger side



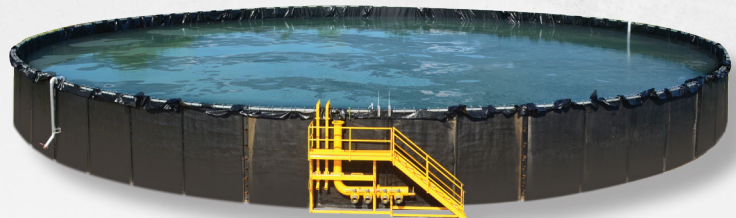
SMOOTH AND CORRUGATED WALL FRAC TANKS

- 1/4 inch Construction
- Steel shot blasted
- Most durable paint and lining in the industry
- Floor structure undercoating
- New Patented Connecting Catwalk System
- Available from multiple plant locations
- Available in 10,000-21,000 gallon capacities



WATER CORRALS

- 1,764,000 gal tank = 84 Frac tanks (made up of 13 sections)
- 1,008,000 gal tank = 48 Frac Tanks (made up of 10 sections)
- 504,000 gal tank = 24 Frac Tank (made up of 7 sections)



MIXING TANK

- Flange Mount Blaylock Ll10 P/V Vent 16Oz Pressure, Baker Spec
- 4" Flange With Blind Capand Chain
- 2 - 38" Manways
- Safetywalk Wayon Roof
- Access Stairs
- Front Drain W/Valve, Bullplug, Chain





PUMPS

Whether you need the complete frac spread or the smallest water transfer pump Dragon has a solution.

Centrifugal pumps or heavy-duty pumps for handling solid waste and trash, Dragon has you covered. We carry a full line of pumps that can run on a variety of fuels – electric, diesel, or natural gas. Dragon will also help you select the right pump with the right pressure to insure you don't incur extra horsepower expense.

WATER TRANSFER PUMPS

- 173HP - 768HP Engines
- Enclosed Stainless Impeller for clear water applications
- Flow Rates up to 8500GPM
- TDH up to 450ft
- Self-Priming
- Heavy Duty Trailer/Skid Package



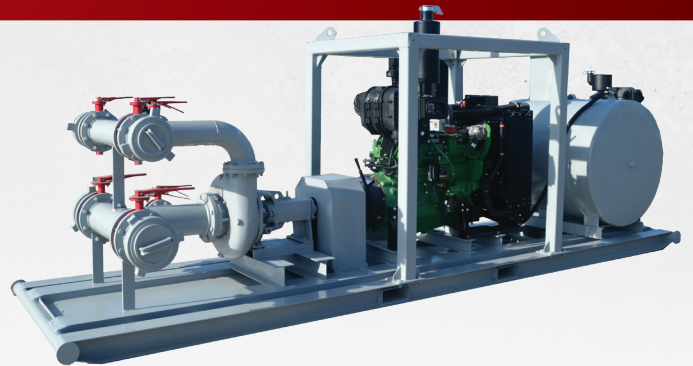
HIGH HEAD PUMPS

- 125HP - 768HP Engines
- Enclosed Stainless Impeller for clear water applications
- Flow Rates up to 4000GPM
- TDH up to 650ft
- Self-Priming
- Heavy Duty Trailer/Skid Package



DRAGON 19' SKID PUMP

- Centrifugal Mud Pump
- 173HP JD Engine
- Mud tank rolling capabilities
- 8x6x14 Dragon 250 Centrifugal Pump
- Seal Saver for run dry applications
- Frac tank manifold Package



DEWATERING PUMPS

- 49HP - 175HP Engines
- Enclosed Stainless Impeller capable of handling 3" solids
- Flows Rates up to 6500gpm
- TDH up to 350ft
- Self-Priming
- Heavy Duty trailer/skid package





STIMULATION EQUIPMENT

Complete frac spread
equipment and support
in every shale play.

From the toughest frac pumps and blending units to water transfer to the most advanced data control systems Dragon manufactures everything in house to ensure the highest quality. Plus we have parts and service centers located in every major North American hydrocarbon area, staffed with frac experts who know how to deploy our equipment to best fit your project. Whether you need the complete frac spread or the smallest water transfer pump Dragon has a solution.

MOBILE FRAC PUMP

- Capacity: 85,000 lbs.
- Overall Width: 8' 6"
- Caterpillar 3512E Tier IV Final Diesel Engine, Rated at
- 2500 BHP
- Caterpillar TH55 Petroleum Transmission
- Dragon Quintuplex Pump
- Dragon Controls with Remote and Cable



MOBILE BLENDER

- Heavy Duty Tri-Axle Trailer
- (1) Tier IV Diesel Engine CAT C18 (800HP)
- CAT CX35 Transmission
- (1) Tier IV Diesel Engine - CAT C18 (755HP)
- Hydraulic System
- Mixing System



HYDRATION UNITS

- 200 bbl hydration tank with (3) compartments (200 bbl max volume)
- Working fluid rate: 120 bpm
- 350HP (or equivalent) diesel engine
- Liquid add system (4) pumps
- (2) gel mixing pumps
- 12" manifolds (each side)



CHEMICAL TRAILER

- 125HP (or equivalent) diesel engine
- Maximum volume available: (12) 330 gallon plastic totes
- Maximum working fluid rate: 30 GPM per section
- (10) flow meters
- (10) 12v motorized hose reels
- Catwalk with railings over tote area



DATA TRAILER

- 42' control trailer
- (2) areas separated by partitioned walls
- Data control area with customer seating in slide-out
- Monitor wall mounts
- Cable reel compartment
- Underbody storage compartments
- Satellite dish for real-time transmission



DATA VAN

- 26' control cabin
- T270 class 6 Kenworth (or equivalent)
- 6 speed Eaton automatic transmission (or equivalent)
- Electric slide-out room
- Satellite dish for real-time transmission



SAND DRAGONS

- Available in 3,000 and 4,000 cubic feet
- 125hp series (or equivalent) diesel engine
- 24" wide conveyor belt with 3" sides
- (2) hydraulic landing gears
- Hydraulically adjusted rear discharge boom
- (4) storage/transfer compartments



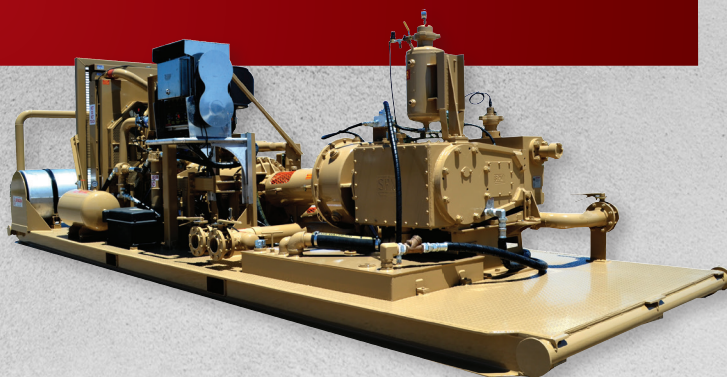
FRAC WATER HEATER

- 38 million btu water heater
- 350hp (or equivalent) diesel engine
- 300 usg hydraulic tank
- Water flow: 700 gpm @ 70 psi inlet pressure (nom), 500 gpm @ 50 psi inlet pressure (nom), 350 gpm @ 30 psi inlet pressure (nom)
- Temperature rise 70° @ 700 gpm (nom)
- Fuel rate 4 gpm/240 gph @ full fire (nom)



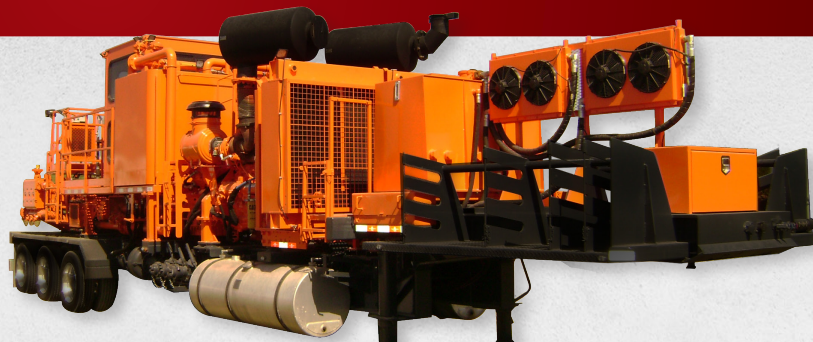
600 HP SKID MOUNT

- 600hp (or equivalent) diesel engine
- Automatic transmission, manual LU
- 600hp triplex pump
- 24v electrical system
- Release manifold (available)



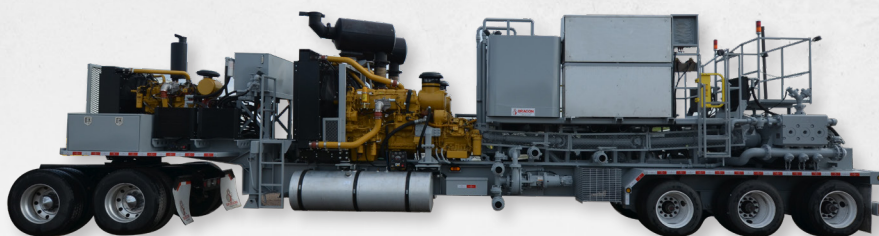
TWIN PUMPER

- (2) CAT C15 diesel engines
- (2) CAT Cx31 drive transmissions
- (2) High pressure TWS 600S pumps
- 20 bbl dual compartment tank
- 5x4 dragon centrifugal pumps



CEMENTER - TRAILER MOUNTED

- (2) cat c18 diesel engines
- Cat cx38 transmission
- (2) 600hp triplex pumps
- 10 bbl mixing tank: (2) sections with (2) agitators
- 20 bbl displacement tank: (2) 10 bbl sections
- High energy recirculating jet mixer and diffuser



CEMENTER - CHASSIS MOUNTED

- 605HP chassis engine
- CAT C15 595HP deck diesel engine
- (2) TWS 600S triplex pumps
- High energy recirculating jet mixer and diffuser
- 7 bbl mixing tank with agitator
- 20 bbl displacement tank: (2) 10 bbl sections
- Dragon centrifugal pumps



HOT OILER

- Kenworth W900 day cab
- Cummins ISX 525HP engine
- 10-speed road ranger transmission
- 7 million BTU input; propane fired
- 75 bbl capacity tank
- Tee triplex pump 5,000 psi, 5" stroke, 3" plungers
- Viking charge pump | Roper discharge pump
- Iron racks
- Twin stack 480 gallon ASME propane tank



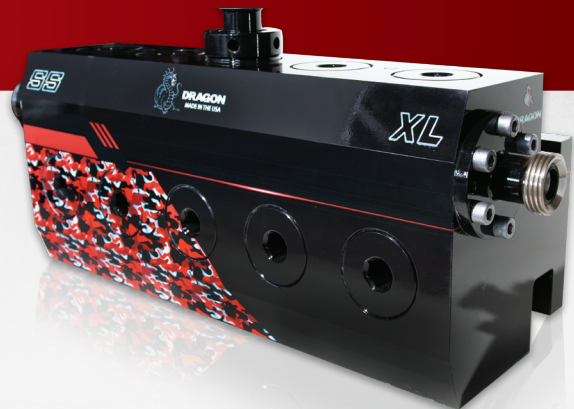
TEE KILL PUMP TRUCKS

- Kenworth W900 bobtail chassis
- Cummins ISX engine
- Road ranger 10 speed transmission
- TEE Triplex pump 5,000 psi 5" stroke, 4" plungers
- 80 bbl capacity tank
- Charge pump
- Load/unload pump



FLUID ENDS

- Triplex & Quintuplex valve over valve
- Triplex & Quintuplex "Y" style 10" & 12" centers available
- Compatible with most manufacturers power ends
- 600HP & 1000HP
- Carbon steel or stainless steel
- Readily available



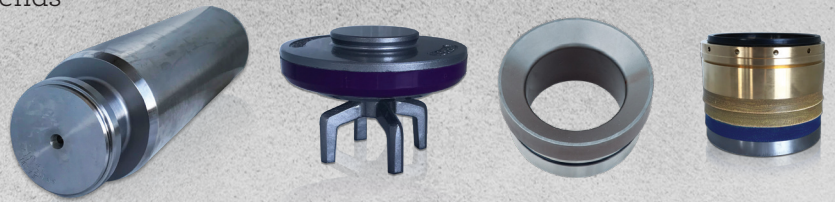
POWER ENDS

- 2500 maximum input HP
- 200,000 lbs rod load
- 8" stroke/10" centers
- Fabricated from 1" thick high strength, low alloy steel plate
- Heavily welded cross members for rigidity and strength
- 2 3/4" thick nose plate to accommodate 2" stay rod threads
- Triplex 2250HP also available



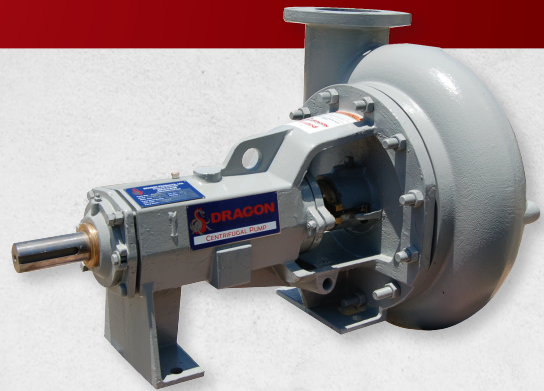
EXPENDABLES & TOOLS

- Compatible with most manufacturers fluid ends
- Plungers
- Valve & seats
- Packing (standard or gold)
- Other fluid end parts
- Fluid end maintenance tools
- Stocked at all dragon locations



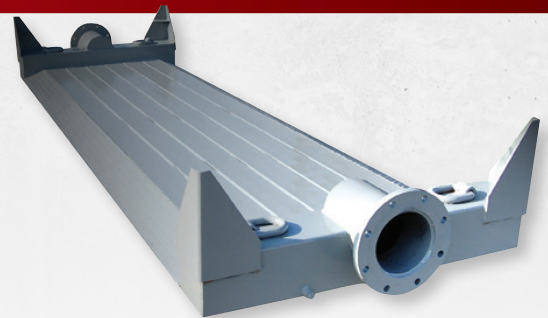
CENTRIFUGAL PUMPS

- 118 and 250 series
- Components interchangeable with most major brands
- Sizes ranging from 1.5x1 to 10x8
- Optional Dragon Seal Saver



ROAD CROSSING UNITS

- 8" Flange x 12 or 24 feet or 12" Flange x 12 or 24 feet
- Four heavy duty "D" lifting rings
- Angled approach ramps
- Constructed from 1/4" steel wall material
- 3" x 6" rectangular crosstubing
- 150# Flange inlet/outlet
- Hot dipped galvanized to prevent corrosion and rust for longer production life



MUD MIXING SYSTEM COMPONENTS

- Electric pumps, mud hoppers, agitators





PRODUCTION EQUIPMENT

Dragon produces
confidence.



Dragon provides a full range of high-integrity surface production equipment. We have the expertise to build equipment exactly to your specifications and produce it in volume, quickly. So you can meet your commitments, be aggressive in your planning, and seize the competitive edge. That's confidence you can only get from Dragon.

PRODUCTION TANKS

- Built to API 12F specifications monogrammed and non-monogrammed
- 3/16 or 1/4 inch steel plate construction
- Steel grit blasting prior to direct to metal industrial coating paint
- Internal lining available
- 90-1000 bbl



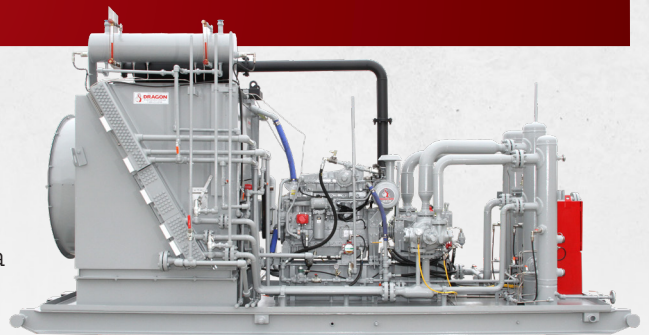
SEPARATORS & HEATER TREATERS

- Heated or non-heated
- 2 & 3 Phase
- Vertical or horizontal
- 50-1440 PSI
- 2'-12' diameters | 4'-60' lengths
- ASME Code or non-code
- Option: Skid or non-skid
- Option: Fully piped and assembled



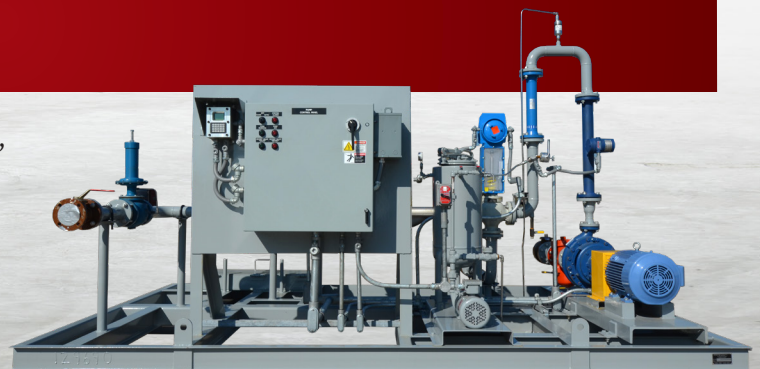
GAS COMPRESSORS

- 95-380BHP
- Driver: Murphy Eics-engine integrated control system, integrated CD ignition, air/fuel control and electronic governing speed control
- Exhaust: Critical grade exhaust silencer with 30 to 38 dba noise reduction and murphy emissions kit with precious metals catalyst
- Start System: 24V DC electrical (air/gas start optional)



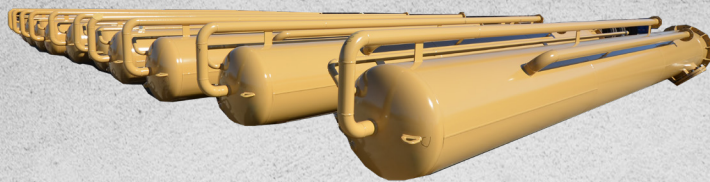
LACT UNITS

- Unit Sizes Available: 2, 3, 4 and all the way up to 8"
- Truck loading, unloading and pipeline
- High Accuracy Coriolis Metering | Positive Displacement Metering
- Product Quality Analysis - BS and W Monitor
- Divert Valve for off-spec product
- Volume based sampling for off-site testing
- Automated operations and remote access to stored data



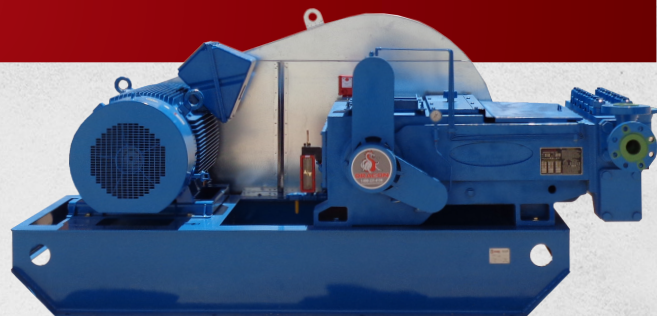
VAPOR RECOVERY TOWERS

- Ease of installation eliminates the need for cranes and man lifts during tank battery construction
- Oil flow rate up to 1500 BPD
- ASME- stamped and non-stamped
- Height- 30' to 50'
- 75 Working PSI and 125 Working PSI



PRODUCTION PUMPS

- Circulating Gear Pumps
- ANSI Centrifugal Water Transfer Pumps
- SWD Injection Pumps (either HCP or PD)
- Midstream & Crude Gathering Pumps



LPG/NGL STORAGE

- With or without skid
- 12,000-90,000 gallon capacity
- Conforms to current edition / latest revision of ASME, Section VIII, Div. 1, rules for construction of pressure vessels
- Standard operating pressure and temperature: 250 PSI @ 125 °F



HDPE POLY PIPE

- Manufactured with bimodal, high molecular weight PE4710 resin
- Meets ASTM F2619 and F714 standards
- Applications - oil and gas gathering, crude transmission, saltwater disposal.
- 2" to 16" IPS Pipe Diameter; 7 to 17 DR
- 2" to 4" Coil Sizes; 6" to 16" in 40' or 50' Stick Length





RIGS AND COMPONENTS

What you need,
when you need it.

Dragon manufactures a full line of 300 to 1,000 HP Cooper™ Rigs at our state-of-the-art U.S. facility and our rig team is one of the most seasoned in the industry. Whether you need a well servicing rig, a workover rig, a drilling rig, mud pumps and systems or parts and service Dragon has you covered.

DRILLING RIG

- Custom manufacture of drilling rigs from 550 to 1000 HP
- Hook loads from 250,000 to 450,000 lbs



WORKOVER RIG

- 300 to 1,000 HP Cooper™ Rigs
- Allison Transmission
- Self propelled and trailerized chassis



BRAKE BLOCKS

- Leading distributor of Indutex SA brake blocks
- Manufactured in asbestos, non-asbestos, or natural fibers, each block comes arched to the correct rim diameter and are easy to install
- Our brake blocks are a standard fit to all Cooper rigs and other leading industry brands



TRIPLEX MUD PUMPS

- Engine – Series 60 Tier III Detroit Engine
- Transmission – Allison HT750DR
- Input Horsepower – 440 max
- Pump Speed Rating – 300 max
- Piston Size – 4 1/2"
- Fluid End Working Pressure Rating – 3,000-5,000 PSI
- Discharge Connection Size – 3"
- Suction Connection Size – 6"



PRE MIX MUD UNITS

- 225-320 bbl
- Diesel/Hydraulic power or electric
- Complete with Hopper, shaker, agitators, and mud guns



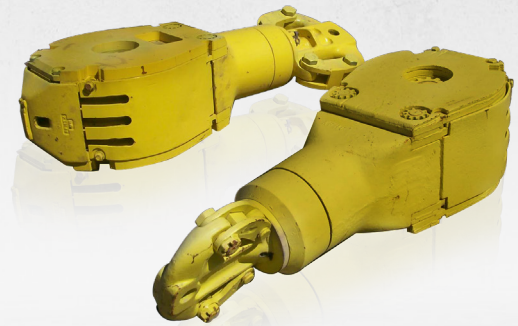
BASE BEAMS

- Operation on a base beam will derate the hook load and wind capacity of the mast
- Dimensions: 40' long x 5' wide x 15" tall
- Weight: 17,000 lbs



MCKISSICK TUBING BLOCKS

- Dragon Rig Sales & Service offers Rebuilt McKissick Tubing Blocks at our Victoria, TX and Odessa, TX locations. The Rebuilt Blocks are disassembled, inspected per McKissick's inspection criteria, Mag Particle Inspected, painted, reassembled and come with inspection reports. Pull test is optional and comes with a pull test report.



MAST

- 71'-124' Clear height
- API 4F, 4th Edition Certified
- 150,000-450,000 lb hook load



DRAGON HELPS YOU

Make It Happen

At Dragon, we stock one of the most extensive spare parts inventories in the industry. We carry the full range of OEM parts for rigs, pumps, tanks, trailers, containers and other equipment – not just Dragon products, but all major brands.

We stand ready to support you 24/7 to keep your operation rolling.



OUR LOCATIONS

U.S.

Alvarado, TX

3300 IH-35W. South
Alvarado, Texas 76009

P: 817-783-5530

Toll Free: 877-783-5538

Alvarado, TX

1201 E. Hwy 67
Alvarado, Texas 76009

P: 817-783-5530

Toll Free: 877-783-5538

Akron, IN

8857 E State Road 14
Akron, IN 46910

P: 574-893-1569

Beaumont, TX (HQ)

1655 Louisiana Street
Beaumont, TX 77701

P: 409-833-2665

Toll Free: 800-231-8198

Broussard, LA

526 La Flamme Rd
Broussard, LA 70518

Toll Free: 800-231-8198

Casper, WY

4500 33 Mile Road
Casper, WY 82604

P: 307-472-9740

Center, TX

3174 ST Hwy 7 W.
Center, TX 75935

P: 936-591-0030

Houston, TX

4400 Post Oak Pkwy
Suite 2140
Houston, TX 77027

Toll Free: 800-231-8198

Hwy 90 – Beaumont, TX

2609 Wespine
Beaumont, TX 77713

P: 409-860-9709

Hobbs, NM

1715 S Dal Paso
Hobbs, NM 88240

Toll Free: 800-231-8198

Jacksboro, TX

4094 Hwy 281 N.
Jacksboro, TX 76458

P: 281-470-1903

La Porte, TX

816 W Barbours Cut Blvd.
La Porte, TX 77571

P: 281-470-1903

Toll Free: 877-231-8198

Lamar, CO

700 Avenida Colonia
Lamar, CO 81052

P: 719-336-9140

Lathrop, CA

15700 McKinley Avenue
Lathrop, CA 95330

P: 209-858-9125

Toll Free: 888-648-5737

Liberty, TX

205 FM 1909
Liberty, TX 77575

P: 936-334-0182

Toll Free: 866-386-0589

Los Fresnos, TX

42134 E FM 510
Los Fresnos, TX 78566

P: 281-470-1903

Rockies, CO

3777 Puritan Way
Frederick, CO 80516

P: 409-833-2665

Toll Free: 800-231-8198

San Angelo, TX

6738 Sideview Road
San Angelo, TX 76901

P: 325-617-7972

Toll Free: 800-231-8198

Odessa, TX

2394 W Catlin St.
Odessa, TX 79766

P: 432-333-8177

Toll Free: 877-783-5538

Odessa, TX

960 S Pagewood Ave
Odessa, TX 79761

P: 432-332-8426

Provo, UT

700 South 550 East Street
Provo, UT 84606

P: 801-377-2065

Silsbee North, TX

972 FM 92,
Silsbee, TX 77656

P: 409-386-0589

Silsbee South, TX

580 Willard Lake Road
Silsbee, TX 77656

P: 409-832-4700

Springer, OK

10834 State Hwy 53
Springer, OK 73458

P: 580-653-2171

Toll Free: 800-234-2329

Victoria, TX

1203 Industrial Park Dr.
Victoria, TX 77905

P: 361-576-0682

Williston, ND

5042 141st Ave NW
Williston, ND 58801

P: 701-774-5930

Wooster, OH

3310 S. Columbus Rd.
Wooster, OH 44691

P: 330-345-3968

Toll Free: 877-563-2701

Yukon, OK

10701 NW 2nd Street
Yukon, OK 73099

P: 405-324-2193

CANADA

Grande Prairie

9520 99th Street
Clairmont, AL, T8X-5A8

Toll Free: 800-231-8198

Red Deer

213 Spruce Street,
Red Deer AB, T4E-1B4

P: 403-340-3600



DRAGONPRODUCTSLTD.COM

PARTS | MANUFACTURING | SERVICE >> WE'VE GOT YOU COVERED.

DRAGON PARTS HOTLINE >> 1.888.801.7778 | TOLL FREE >> 800.231.8198