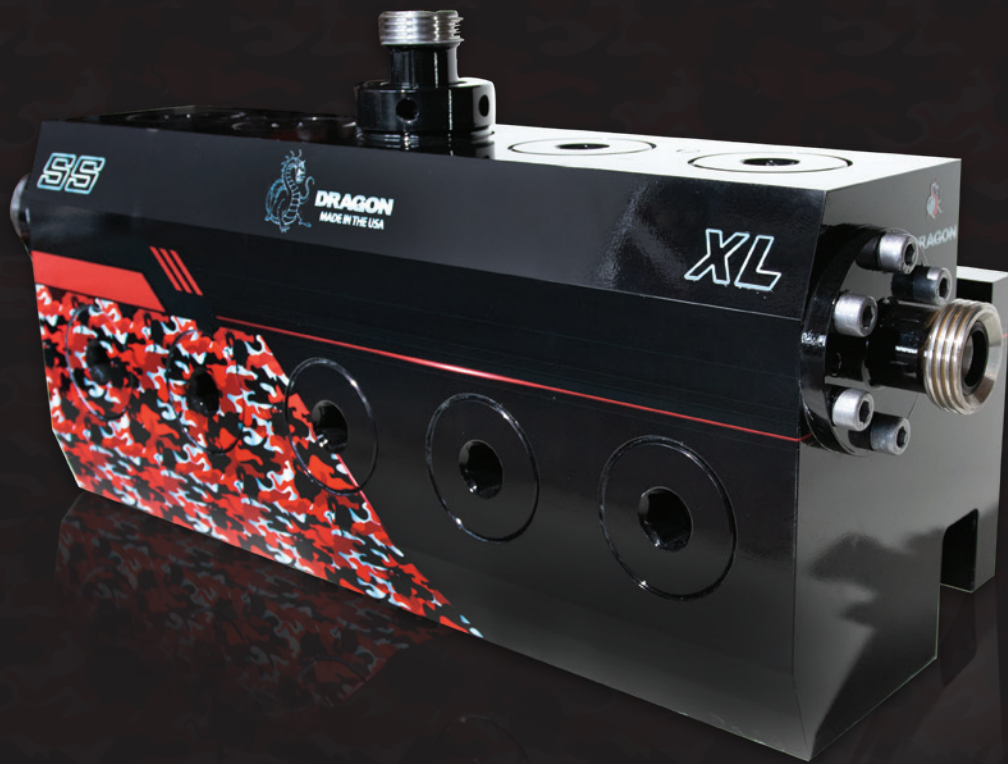




XLseries

FRAC PUMP PARTS



FRAC PUMP PARTS AND FLUID END EXPENDABLES.



Dragon offers a full range of pump parts and expendables including fluid ends, valves, seats, and plungers for virtually all makes of pumps.

Engineered and manufactured in our state-of-the-art facilities across North America, all Dragon equipment and parts are severe duty engineered to perform in the harshest environments.

Dragon service centers are strategically located across every major hydrocarbon producing region and extensively outfitted with all the parts needed to keep your operation running.

Backed by skilled technicians Dragon also has the expertise to completely rebuild your fluid ends and pumps.

Fluid End

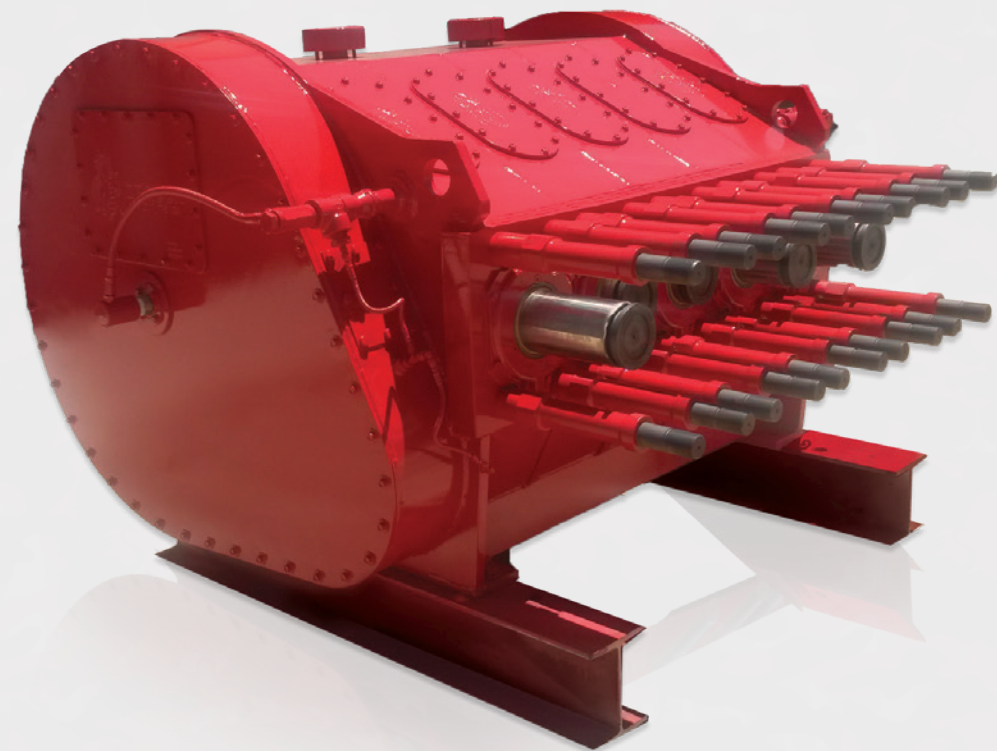
Dragon Fluid Ends are engineered and manufactured in designated ISO 9001:2008 state-of-the-art facilities across North America. All Dragon equipment and parts are severe duty engineered to perform in the harshest environments.



- Stainless Steel
- YWS: Triplex & Quintuplex (52" & 60")
- Triplex 2250
- Quintuplex 2500

Power End

The Dragon DP2500Q, XL II Power End is designed using advanced, modern analytical and engineering methods and techniques, to withstand the rigorous operation in the 21st century oil and gas exploration.

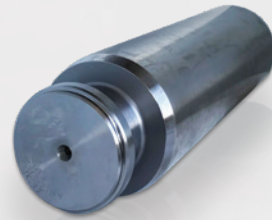


- 2500 Maximum Input HP
- 200,000lb Rod Load
- Maximum 330 RPM
- Fabricated from 1" thick high strength, low alloy steel plate
- Heavily welded cross members for rigidity and strength
- 2" thick nose plate threaded to accommodate 2" stay rod threads

Expendables

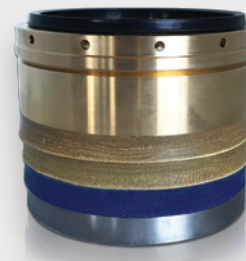
PLUNGER

The Dragon DP2500Q, XL II Power End is designed using advanced, modern analytical and engineering methods and techniques, to withstand the rigorous operation in the 21st century oil and gas exploration.



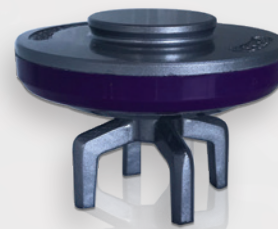
PACKING

The Dragon DP2500Q, XL II Power End is designed using advanced, modern analytical and engineering methods and techniques, to withstand the rigorous operation in the 21st century oil and gas exploration.



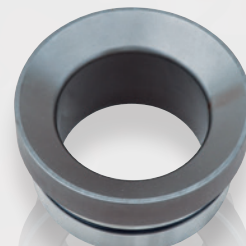
VALVE

The Dragon DP2500Q, XL II Power End is designed using advanced, modern analytical and engineering methods and techniques, to withstand the rigorous operation in the 21st century oil and gas exploration.



SEAT

The Dragon DP2500Q, XL II Power End is designed using advanced, modern analytical and engineering methods and techniques, to withstand the rigorous operation in the 21st century oil and gas exploration.



Dragon Products, LLC

1201 E. Hwy 67
Alvarado, TX

877-783-5538

dragonproductsltd.com

