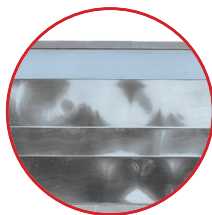
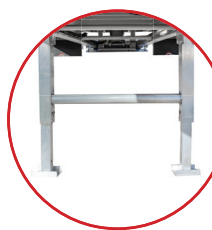


VANTAGE T-91 39FT END DUMP

BOX: 5454 H32 ALUMINUM, .195" THICK FLOOR, .145" THICK WALL, SINGLE PANEL, 85" WIDE ON 102" WIDE AXLES



REAR GATE: GRAVITY GATE AT 8 DEG PITCH, AIR ACTUATED LATC CYLINDER WITH AUTO BODY RELEASE AND MANUAL VALVE. GASKET WITH DOOR SCREWS.



LANDING LEGS: ALUMINUM TELESOPING LEGS



SUSPENSION: 2-BOLT ON WATSON CHALIN INTEGRA TI300 17" RH (LIGHT WEIGHT INTEGRATED) AIR RIDE, 30,000 LB PER AXLE, TANDEM AXLE WITH FRONT AXLE LIFT

39' FRAMLESS 54" WALL ALUMINUM END DUMP



A **DRAGON** FAMILY BRAND

DESCRIPTION: 39' FRAMLESS 54" WALL ALUMINUM END DUMP

TYPE: ALUMINUM LIGHTWEIGHT SINGLE WALL • **COMMODITY:** NON - DEMOLITION MATERIALS

STANDARD FEATURES

- **BOX:** 5454 H32 ALUMINUM, .195" THICK FLOOR, .145" THICK WALL, SINGLE PANEL, 85" WIDE ON 102" WIDE AXLES
- **FLOOR STRUCTURE:** HIGH ALUM CHANNEL, 15 1/2" ON CENTER
- **HOIST:** 8" DIA 5 STAGE, SINGLE ACTING, w263" STROKE
- **WELDS:** INTERNAL - AS WELDED, EXTERNAL, AUTOMATED EXTRUSION SEAM - SMOKE AND DISCOLORATION REMOVED
- **REAR GATE:** GRAVITY GATE AT 8 DEG PITCH, AIR ACTUATED LATC CYLINDER WITH AUTO BODY RELEASE AND MANUAL VALVE. GASKET WITH DOOR SCREWS.
- **COUPLER:** STEEL PICKUP PLATE, WITH BUSHING SADDLES
- **LANDING LEGS:** ALUMINUM TELESCOPING LEGS
- **DRAFT ARM:** ALUMINUM TUBING WITH REINFORCED CHANNEL
- **NOSE:** ROUND SHAPE, .25" ALUM 5454-H32, WITH HEAVY DOGHOUSE STRUCTURE FOR HOIST SUPPORT, CAPPED WITH STEEL BOLTED PLATE
- **LIGHTS:** FULL DOT LIGHTS, LED SEALED LIGHTS, HARNESS AND JUNCTION BOX WITH TERMINAL STRIP.
- **SUSPENSION:** 2-BOLT ON WATSON CHALIN INTEGRA TI300 17" RH (LIGHTWEIGHT INTEGRATED) AIR RIDE, 30,000 LB PER AXLE, TANDEM AXLE WITH FRONT AXLE LIFT
- **WHEELS:** 10 HOLE, ALUMINUM, HUB PILOT
- **TIRES:** 11R-24.5 CUT/CHIP RESISTANT TIRES
- **BRAKES:** 16 1/2 X 7 WITH SPRING PARKING, AUTO SLACKS, WABCO 4S-2M ABS SYSTEM
- **BUSHINGS:** ALL JOINTS WITH GREASABLE FITTINGS
- **MUD FLAPS:** ANTI SAIL
- **STEPS:** (3) STEPS LOCATED AT REAR DRIVER SIDE, (4) STEPS CENTERED ON NOSE.

OPTIONAL FEATURES

- **TARPS:** NONE SUPPLIED, BUT AVAILABLE PER CUSTOMER REQUEST.



COPYRIGHT THE MODERN GROUP, LTD.

Corporate Office | Express Mail: 1655 Louisiana, Beaumont, TX 77701 | Regular Mail: P.O. Box 790, Beaumont, TX 77704

(409) 833-2665 • USA Toll Free 1-800-231-8198 • Fax (409) 833-3170 • email: tanktrailer.sales@modernusa.com • website: www.dragonproductsltd.com

