



# Compactor Receiver Trailer



## SPECIFICATIONS:

- Type: Hoist Trailer, non-dot spec
- Capacity: 50,000 Lbs, Plus 2%
- Length: 28Ft
- Floor: 1/4 Pl.
- Floor Crossmembers: 3 X4.1 Channel, 18" On Centers.
- Walls: 3/16" Pl Solid Welded
- Front: 3/16" Pl Solid Welded
- Door: Hinged Main Door 3/16" Pl With 3/16" Tubing Frame. Hinged Lower
- Doors 10Ga. Pl
- WELDS: CONTINUOUS INSIDE, AND OUTSIDE
- COMPARTMENT: SINGLE
- SUSPENSION: AIR RIDE WITH MANUAL DUMP VALVE.

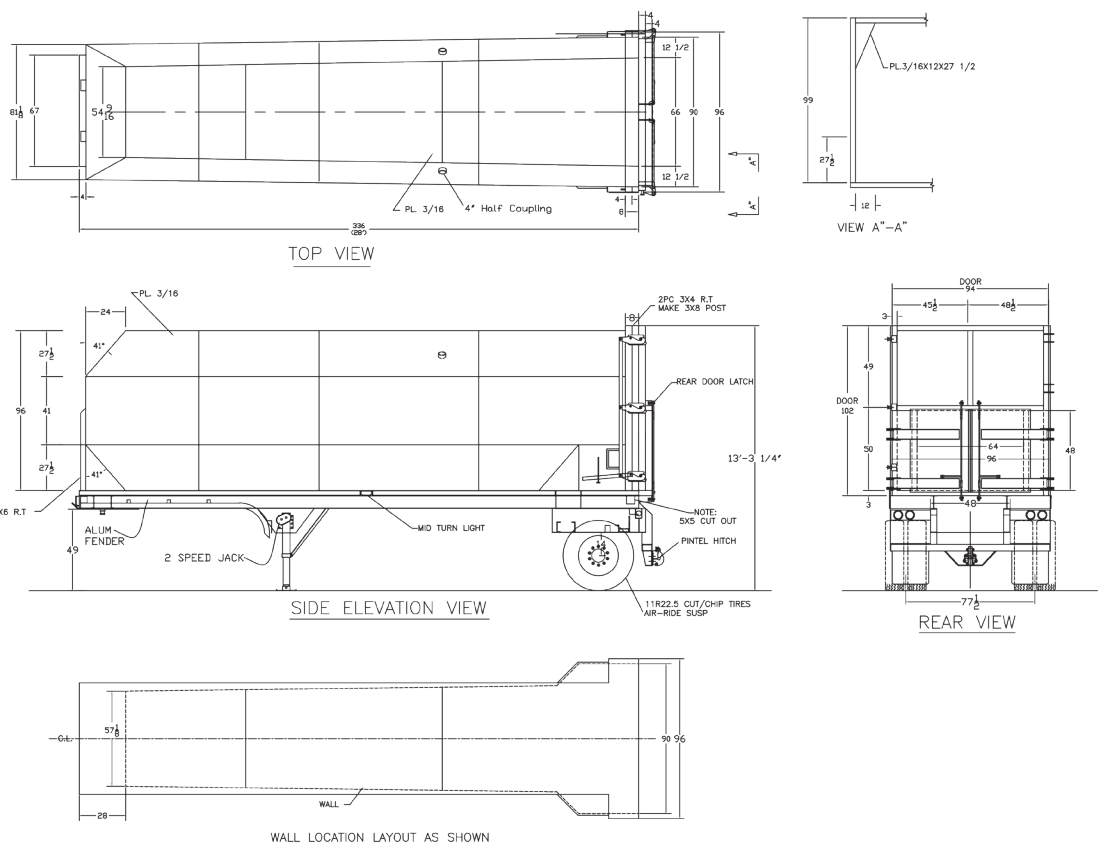


[tanktrailer.sales@modernusa.com](mailto:tanktrailer.sales@modernusa.com) • [www.dragonproductsltd.com](http://www.dragonproductsltd.com) • 877-231-8198

U.S. owned and operated for over 50 years. © Copyright 2014 Modern Group Inc. All rights reserved.

# Octagon Packer RecieverTrailer

- Axles: 22,500 Lb Round W/Outboard Drums
- Wheels: 10 Hole Steel Disc Hub Pilot
- Tires: 11R X 22.5 Radial
- Brakes: 16 1/2 X 7 With Spring Parking, Auto Slacks, Abs
- Upper Coupler: Fixed Non-Adjustable
- Landing Legs: 2 Speed, Heavy Duty, High Capacity Lift
- Bumper: 4 X 8 Tube
- Fenders 9 Ft Length Formed Alum Front W/ Mudflaps. Steel 3/16" Diamond
- PI At Rear Over Tire Area W/ Mudflaps
- Mud Flaps: Anti Sail
- Lights: Full Dot Lights, Sealed Lights, Harness And Junction Box With
- Terminal Strip.
- Coating: All Surfaces White Metal Steel Grit Blast, 2.5 Mil Profile (Sp-10),
- Interior And Exterior Coated High Build Epoxy Primer And
- Color Coated With High Solids Polyurethane, 4-6 Mil Dry Film
- Thickness.



[tanktrailer.sales@modernusa.com](mailto:tanktrailer.sales@modernusa.com) • [www.dragonproductsltd.com](http://www.dragonproductsltd.com) • 877-231-8198

U.S. owned and operated for over 50 years. © Copyright 2014 Modern Group Inc. All rights reserved.